

WIDE1 24V-AC/DC

IP67

20w - 2490 Lm

40w - 4980 Lm

6.000°K - 40.000h

RoHS RAEE CONFORMITY



Connettore dritto
con cavo 5mt
*Straight Female connector with
power cable*



Connettore a 90°
con cavo 5mt
*90° Female connector with
power cable 5mt*



Versione WIDE1 C con
Connettore M12 a 4-poli
*WIDE1 C version with M12 Male
connector at 4-pin*



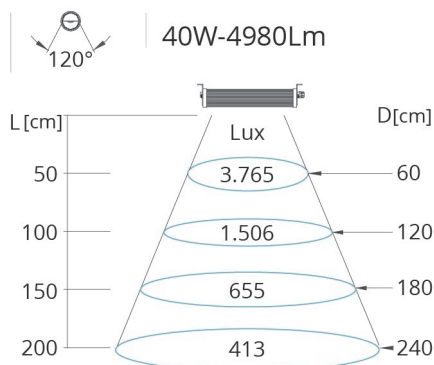
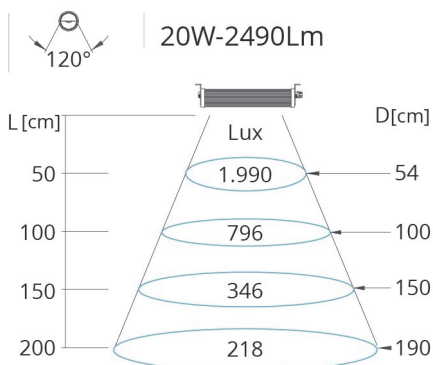
Versione WIDE1 P
con Pressa-cavo
*WIDE1 P version with cable
clamp*

CARATTERISTICHE

Fino all '85% di risparmio energetico
Basso calore
Zero manutenzione
Struttura in alluminio
Dotata di vetro ad alta resistenza e griglia di lenti anti-irritazione per gli occhi
Resistente ai lubro-refrigeranti
Direttive 2006/95/CE, 2004/108/CE e 2006/42/CE come previsto dalla Normativa UNI EN 1837

FEATURES

*Up to 85% energy saving
Low performing heat
Zero maintenance
Aluminium structure
Equipped with high resistance glass and anti-irritation lens grid
Resistant to coolants and lubricants
Complies with Directives 2006/95/EC, 2004/108/EC and 2006/42/EC as required by Normative UNI EN 1837*



WIDE1 24V-AC/DC - 20W - 40W - IP67

2 versioni di potenza e lunghezza:

- **WIDE1-201** con 1 Set di Led (Nr.48) per una potenza totale di **20W**
- **WIDE1-202** con 2 Set di Led (Nr.96) per una potenza totale di **40W**

Alimentazione:

alimentatore **24V-AC/DC** integrato e supporti di fissaggio basculanti

ATTENZIONE:

per le ***WIDE1 C** bisogna sempre ordinare i **connettori**

Femmina con cavo a scelta tra:

- **Connettore Femmina Dritto** con cavo da 5 mt.
- **Connettore Femmina a 90°** con cavo da 5 mt.

2 power and length options:

- **WIDE1-201** with **1 Set** of LEDs (No.48) for a total of **20W**
- **WIDE1-202** with **2 Sets** of LEDs (No.96) for a total **40W**

Voltage

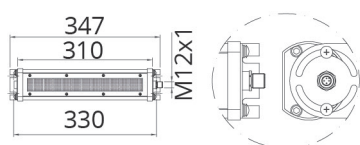
24V-AC/DC built-in LED driver and tilting mounting supports

ATTENTION:

For ***WIDE1 C** Always remember to order the female connectors of your choice between:

- **Straight female connector** with 5mt power cable
- **90° female connector** with 5mt power cable

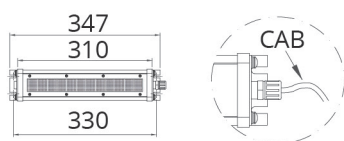
WIDE1 C - 20W con Connettore Maschio WIDE1 C - 20W with Male Connector



ART.	CODE	VIN	WxLed	cable.mt	Kg
WIDE1 201C-24V-AC/DC	08.01.2.12.20.3	24VAC/DC	20W	*	1,16

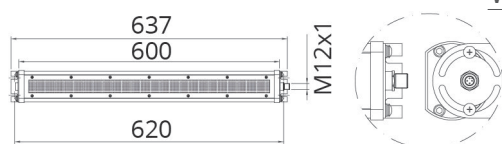
[*Connettore femmina a scelta tra: guarda fondo pagina](#)
[*Female Connectors at choice: see below](#)

WIDE1 P - 20W con Pressacavo WIDE1 P - 20W with cable clamp



ART.	CODE	VIN	WxLed	cable.mt	Kg
WIDE1 201P-24V-AC/DC	08.02.2.12.20.3	24VAC/DC	20W	CV 03 1,80	1,16

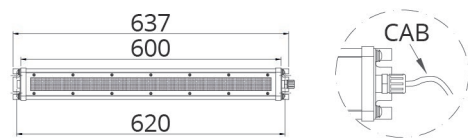
WIDE1 C - 40W con Connettore Maschio WIDE1 C - 40W with Male Connector



ART.	CODE	VIN	WxLed	cable.mt	Kg
WIDE1 202C-24V-AC/DC	08.04.2.12.40.3	24VAC/DC	40W	*	2,50

[*Connettore femmina a scelta tra: guarda fondo pagina](#)
[*Female Connectors at choice: see below](#)

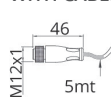
WIDE1 P - 40W con Pressacavo WIDE1 P - 40W with cable clamp



ART.	CODE	VIN	WxLed	cable.mt	Kg
WIDE1 202P-24V-AC/DC	08.06.2.12.40.3	24VAC/DC	40W	CV 03 1,80	2,50

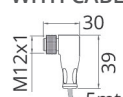
*CONNETTORI FEMMINA *FEMALE CONNECTORS

STRAIGHT CONNECTOR
WITH CABLE 5MT



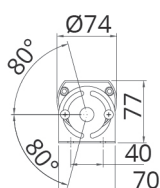
ART CODE C12F4-00+CAB5
00.09.004.1

90° CONNECTOR
WITH CABLE 5MT



ART CODE C12F4-90+CAB5
00.09.003.1

STAFFE ORIENTABILI INCLUSE ADJUSTABLE CLAMPS INCLUDED



SCATOLA MADRE MASTER BOX



Qty: 6 pcs
Dimensions (20W):
64x36x25 cm
Weight: 13 Kg

Dimensions (40W):
92x30x37 cm
Weight: 20 Kg