

# WIDE1 100÷240V-AC

IP67

20w - 2490Lm

40w - 4980Lm

6.000°K - 40.000h

RoHS RAEE CONFORMITY



Versione WIDE1 P  
con Pressa-cavo  
*WIDE1 P version with cable  
clamp*



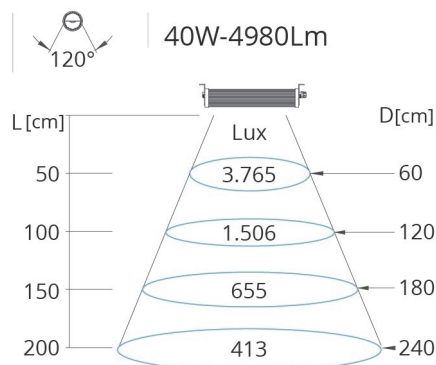
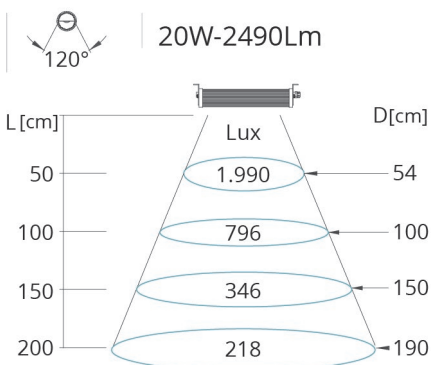
cavo con spina  
Schuko  
*cable with Schuko  
plug*

## CARATTERISTICHE

Fino all '85% di risparmio energetico  
Basso calore  
Zero manutenzione  
Struttura in alluminio  
Dotata di vetro ad alta resistenza e griglia di lenti anti-irritazione per gli occhi  
Resistente ai lubro-refrigeranti  
Direttive 2006/95/CE, 2004/108/CE e 2006/42/CE come previsto dalla Normativa UNI EN 1837

## FEATURES

*Up to 85% energy saving  
Low performing heat  
Zero maintenance  
Aluminium structure  
Equipped with high resistance glass and anti-irritation lens grid  
Resistant to coolants and lubricants  
Complies with Directives 2006/95/EC, 2004/108/EC and 2006/42/EC as required by Normative UNI EN 1837*



# WIDE1 100÷240V-AC - 20W - 40W - IP67

100÷240V-AC

## 2 versioni di potenza e lunghezza:

- **WIDE1-201** con **1 Set** di Led (Nr.48) per una potenza totale di **20W**
- **WIDE1-202** con **2 Set** di Led (Nr.96) per una potenza totale di **40W**

## Alimentazione:

- **100÷240V-AC** con Pressa-cavo e cavo con spina Schuko

## Standard:

- alimentatore integrato e supporti di fissaggio basculanti

## 2 power and length options:

- **WIDE1-201** with **1 Set** of LEDs (No.48) for a total of **20W**
- **WIDE1-202** with **2 Sets** of LEDs (No.96) for a total of **40W**

## Voltage

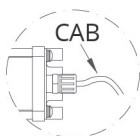
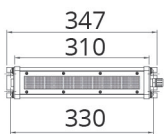
- 100÷240V-AC** with cable clamp and cable with Schuko plug

## Standard:

- built-in LED driver and tilting mounting supports

### WIDE1 P - 20W con Pressacavo WIDE1 P - 20W with cable clamp

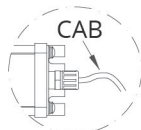
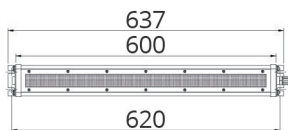
ART.	CODE	VIN	WxLed	cable.mt	Kg
------	------	-----	-------	----------	----



WIDE1 201P-100+240V-AC	08.03.1.12.20.3	100÷240V AC	20W	SP02 1,80	1,16
------------------------	-----------------	-------------	-----	-----------	------

### WIDE1 P - 40W con Pressacavo WIDE1 P - 40W with cable clamp

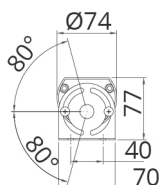
ART.	CODE	VIN	WxLed	cable.mt	Kg
------	------	-----	-------	----------	----



WIDE1 202P-100+240V-AC	08.05.1.12.40.3	100÷240V AC	40W	SP02 1,80	2,50
------------------------	-----------------	-------------	-----	-----------	------

STAFFE ORIENTABILI INCLUSE  
ADJUSTABLE CLAMPS INCLUDED

SCATOLA MADRE  
MASTER BOX



Qty: 6 pcs  
Dimensions (20W):  
64x36x25 cm  
Weight: 13 Kg

Dimensions (40W):  
92x30x37 cm  
Weight: 20Kg